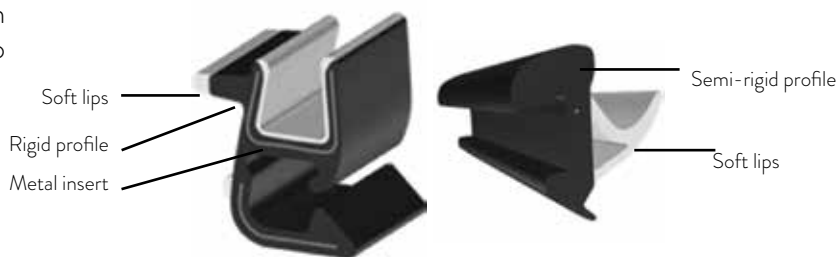


WINDSCREEN SEAL



PART DESCRIPTION

Windscreen seals are technical parts which functions are to ensure the sealing between the car body and the windshield. They generally consist of a rigid or semi-rigid frame on which flexible lips are coextruded. Such parts present a good resistance to UV and to the exposure at low temperatures.



PRODUCTS	APPLICATION & CHARACTERISTICS	Hardness ISO 868 Shore A/D	Specific gravity ISO 1183	Tensile strenght ISO 527	Elongation at break ISO 527
■ NAKANPRENE SEJ 600 R K302	Soft lips, anti-migration (PVC/ABS) MAN Trucks	60A	1,26 Kg./dm ³	15,4 MPa	380 %
■ NAKAN-S VQJ 600 R K302	Soft lips Suzuki	61A	1,2 Kg./dm ³	13,1 MPa	427 %
■ NAKANPRENE S132 K302	Soft lips, improved compression set, resistance to low temperatures Renault - Nissan	62A	1,29 Kg./dm ³	12,5 MPa	430 %
■ NAKANPRENE F1454 1R K302	Coextruded surface Renault - Nissan	72A	1,19 Kg./dm ³	19,2 MPa	360 %
■ NAKANPRENE SEN 703 R K302	Soft lips, improved compression set Toyota	65A	1,23 Kg./dm ³	14,2 MPa	370 %
■ NAKAN-S V62 K302	Semi-rigid profile Renault - Nissan	90A	1,32 Kg./dm ³	21,5 MPa	350 %
■ NAKAN-S VQS 901 R K310	Semi-rigid profile Toyota, Suzuki	90A	1,35 Kg./dm ³	23 MPa	336 %
■ NAKAN-S VQJ 901R K302	Windscreen finisher Suzuki	87A	1,3 Kg./dm ³	19 MPa	250 %

IMPORTANT : The information contained in this document is based on trials carried out by our Research Centers and data selected from the literature, but shall in no event be held to constitute or imply any warranty, undertaking, express or implied commitment on our part. Our formal specifications define the limit of our commitment. No liability whatsoever can be accepted by our company with regard to the handling, processing or use of the product or products concerned which must in all cases be employed in accordance with all relevant laws and/or regulations in force in the country(ies) concerned. This edition cancels and supersedes any former one.